



# Cooperation between St.Petersburg's State Pavlov Medical University and Hamburg University in the field of hematology and transplantology

**Yaitsky N.A.**

**St.Petersburg  
2007**



## The main building of the St.Petersburg's State I.Pavlov Medical University (founded in 1897 г.)





The **St. Petersburg's State I. Pavlov Medical University** (formerly, 1<sup>st</sup> Leningrad I. Pavlov Medical Institute) **was founded in 1897**, as the first Female Medical Institute in Russia.

The City Council provided a place for this building in the Archierey St. (later renamed to L. Tolstoy Street), in close vicinity to Peter-and-Paul Hospital for poor people which existed since 1835.

**W.K. Anrep** became the first Director of the Institute.

A number of well-known statesmen and scientists participated at the establishment and took sponsorship over the construction works.

The great Russian therapist **S.P. Botkin** donated 20,000 rubles.

The building of surgery clinic was funded from the **family of Nobel**.

Big sums were contributed by **I.I. Mechnikoff**



## Faculties of St.Petersburg's State Pavlov Medical University

- Medical faculty
- Dental faculty
- Sport medicine
- Adaptive sport medicine
- Post-doc faculty
- Pre-doc faculty
- High school for nurses
- Faculty for foreign students

Overall number of students – 5000

Doctors of medical sciences – 245

Candidates of medical sciences – 562

Academicians and corresponding members of Russian Medical Academia - 12

Members of Foreign Academia - 48



## Chairs and Clinics of St.Petersburg's State Pavlov Medical University

**Chairs – 64      Clinics -16**

**The main :**

Internal medicine, Cardiology, Pulmonology, Nephrology  
Neurology, Paediatrics, and Infectious Disease;  
Surgery, Urology, and Dentistry;  
Chairs and Clinics of ORL disease and Ophthalmology;  
Central Clinical Laboratory  
Department of Radiology

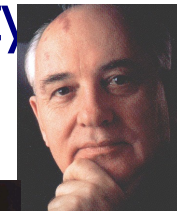
**Infrastructure for Haematological and Oncological servers:**

Department of Bone Marrow Transplantation for adults and children;  
Department of Intensive Care in Haematology and Resuscitation;  
Department of Adult Haematology;  
Laboratory of Tissue Typing;  
Laboratory of Gene Therapy of Onco-haematological Disease;  
Blood Bank Department;  
Department of Separation and Cryopreservation of Haematopoietic Cells.



# Doctors Honoris Causa of St.Petersburg's State Pavlov Medical University

1. I.P.Pavlov – academician, physiologist
2. D.O.Ott – professor, gynecologist
3. I.I.Mechnikoff – professor, physiologist
4. Y.L.Shevchenko – professor, surgeon
5. M.A.Paltstev – professor, pathologist
6. L.A.Verbitskay – rector of St.Petersburg;s University
7. M.S.Gorbachev
8. A.Zander – professor, hematologist (Hamburg  
University, Germany)





Cooperation of SPbSPMU with Universities of Europe and USA in the field medicine and scientific programs includes 30 agreements.

The main of them:

1. **Hamburg University (Hamburg, Germany)**
2. **Nippon Medical School (Tokyo, Japan)**
3. **Pennsylvanian University (Pennsylvania, USA)**
4. **Karolinsky University (Stockholm, Sweden)**
5. **Henan University (Henan, China)**



**Head of International  
Humanitarian Organization  
"UHANITA" Dr. Martin Friedrichs  
with children who ill with  
oncological and hematological  
diseases**





**Lecture of Prof. T. Buechner and Prof. A. Zander**



## **Sign of treaty of cooperation between SPMU and Hamburg University in Scientific Board Hall in 1998.**

**Meeting members: Burgomaster of Hamburg Mr. O. Runde, Rector of SPBMU acad. I.P. Pavlov, Corr.-member RAMS, professor N.A. Yaitsky, President of Hamburg University, Honorary Professor L. Urgan, Consul of FRG in St. Petersburg H.-D. Shmidt, honorary Professor of SPMU, Director of BMT clinic of Hamburg University professor A. Zander and Director of SPMU Hematology Center professor B.V. Afanasyev**

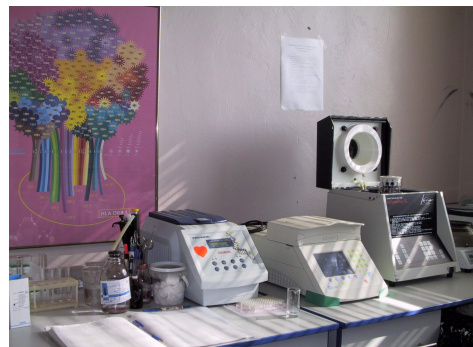
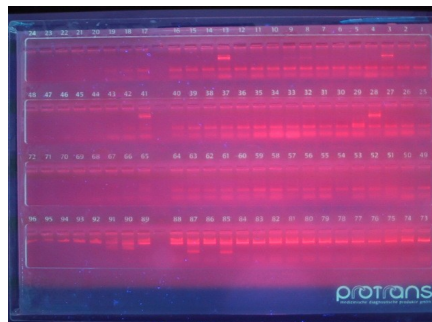




The ceremony of decorating Prof. A. Zander with a mantle of Doctor Honoris Causa of SPSMU (1997).



# EQUIPMENTS FOR LABORATORIES IN THE FRAME OF COOPERATION BETWEEN HAMBURG UNIVERSITY AND SPbPMU





BMT Clinic of SPbSPMU-EUFETS in 2000





# Main results

- About 60 doctors, scientists and nurses got possibility to be trained in Hamburg and others clinics
- Improvement of results of treatment of patients with different hematological and oncological diseases in St. Petersburg
- Transfer of modern scientific and clinical technology to St. Petersburg
- Establishment of cooperation with Universities of European countries and USA
- Integration into EBMT, IBMTR/ABMTR



## IMPORTANT FUTURE EVENTS

- Opening the Raisa Gorbacheva Institute of Children Hematology and Transplantology at Saint-Petersburg Pavlov State Medical University, (September 20, 2007, St. Petersburg)





# Cornerstone Ceremony, September 2002



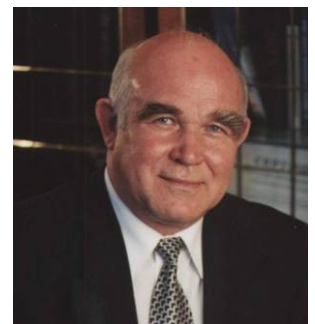
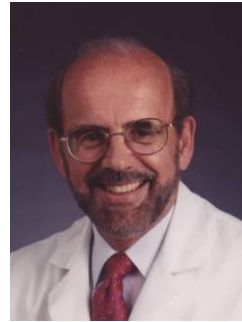
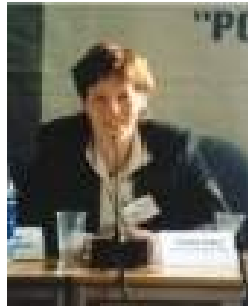
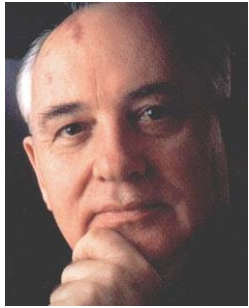
**Prof., Dr.h.c. A. Zander. Nobel Prize Winner, Mr M. Gorbachev**



## Cornerstone Ceremony of R. Gorbacheva Institute of Children's Hematology and Transplantology of SPSMU, 2002



# International Guardian Board of Raisa Gorbacheva Institute





## **Project of Raisa Gorbacheva Institute of Children Hematology and Transplantology SPSMU**

### **International Guardian Board**

**President-** the president of Gorbachev  
Foundation Michael Gorbachev  
(Moscow, Russia)

#### **Deputy chairs:**

- Prof. Tomas Buhner (Munster, Germany)
- Chief of Information agency project RosBalt  
Natalia Cherkesova (St.Petersburg, Russia)

#### **Members of International Guardian Board:**

**Prof N.A. Yaitsky (St.Petersburg, Russia)**

**Prof. A.G. Rummyantsev (Moscow, Russia)**

**Prof. E.B. Vladimirskaia (Moscow, Russia)**

**Prof. Axel Zander (Hamburg, Germany)**

**Prof. Andreas von Dembling (Berlin, Germany)**



## **Structure of Raisa Gorbacheva Institute of Children Hematology and Transplantology (Saint-Petersburg Pavlov State Medical University)**

- 60 beds: 12 - for allogeneic HSCT, 9 - ICU, rest for intensive chemotherapy with/without autologous HSC rescue
- Outpatient Department
- Blood Bank
- LAB of HLA-typing
- LAB of Molecular Biology and Cytogenetic
- LAB of Pathology



**Interior of  
Raisa  
Gorbacheva  
Institute**





# Conclusions

- International cooperation played the key role in improving the situation in development of BMT-program not only in St.-Petersburg but in Russia generally.
- Now the results of the treatment patients with hematological malignancies and solid tumors in according with international standard.